



Missouri Annual Conference Action Plan



TIMELINE

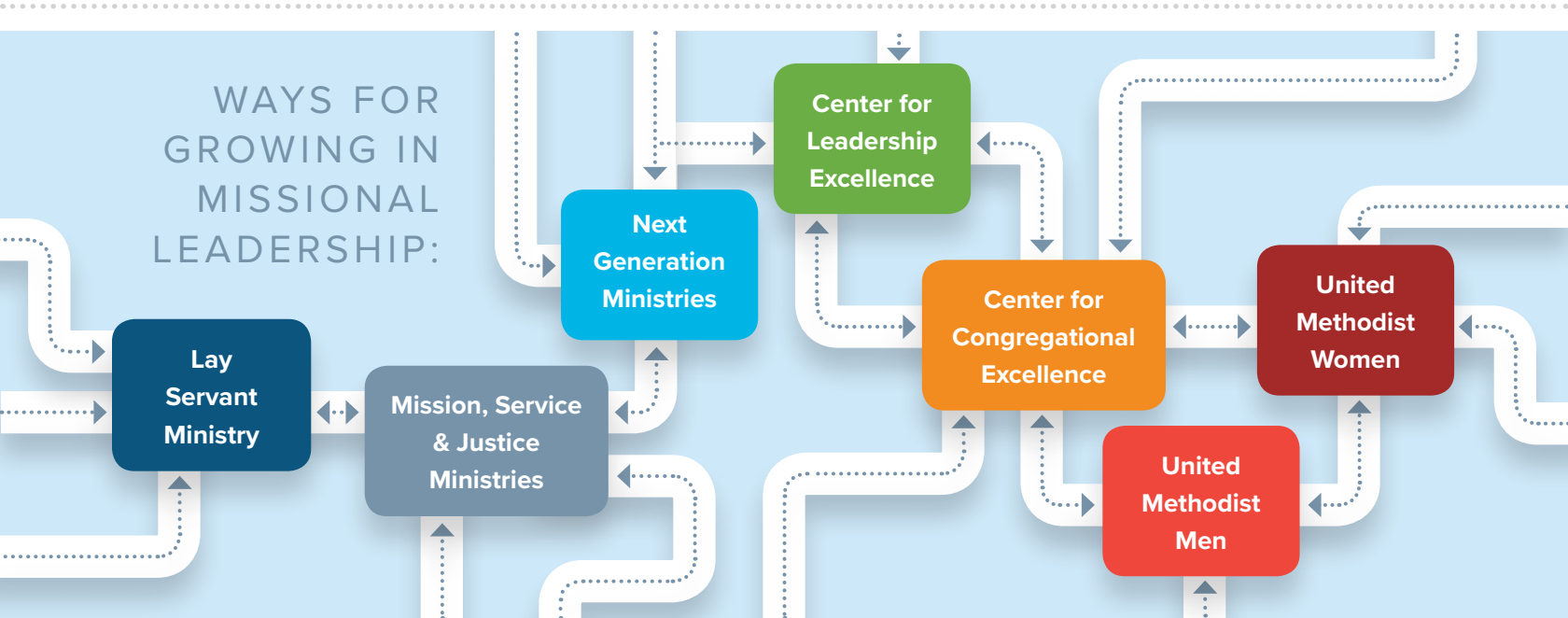
<p>September 2016-May 2017</p> <p>Bishop's Listening Tour (43 listening sessions with 435 people and 80 360° interviews)</p>	<p>June-October 2017</p> <p>Assessment and refinement of learnings</p>	<p>September 2017</p> <p>Conference leaders gathering (Mission Council and Cabinet) affirming Bishop Farr's vision; development of goal-setting areas</p>	<p>October-December 2017</p> <p>Strategic plan development and feedback/reflection</p>	<p>February 2018</p> <p>Approval from Mission Council to move forward with three goals</p>	<p>March 2018</p> <p>Implementation of strategic plan begins with focus on execution; all-church survey sent to confirm starting point</p>	<p>June 2018</p> <p>All conference invitation to join our efforts to make disciples of Jesus Christ for the transformation of the world</p>
---	---	--	---	---	---	--

NEW MISSIONAL LEADERS

Increase New Missional Leaders from 0 to 400 by 6/30/19.

Led by Center for Leadership Excellence

- A missional leader is intentionally growing in Christ in order to serve with vision and hope for the Christian community.
- A disciple becomes a missional leader as they identify others, who identify others, who practice following Christ.
- Missional leaders are freed to lead in the context of their community, local church and beyond.



How we will meet our goal:

- Complete 7 in-person, quality invitations on average per week to people who have not yet been equipped to become a new missional leader.
- Engage 3 ministerial leaders on average per week with an intentional teaching about conversations with potential new missional leaders using *5 Cups of Coffee*.

NEW PLACES FOR NEW PEOPLE

Increase New Places with at least 1 New Person from 800 to 1,200 by 6/30/19.

Led by Center for Congregational Excellence

A new place includes a minimum of one new person who has not been involved in any church for at least one year.

5 Kinds of New Places for New People

1 Small Group

A group of 3-12 people that gathers at least twice a month to experience what it means to Know, Care, Grow and Share:

Know = Know and love God and neighbor (Mk. 12:28-31)

Care = "Bear one another's burdens" (Gal. 6:2)

Grow = "Teach them to obey" through applying scripture (Matt. 28:20)

Share = Witness and serve beyond the church walls as authentic followers (Matt. 28:19 & Mk. 10:45)

2 Recovery Ministry

A group of any size that helps people recover from addictions, e.g., Christian 12-step approach or Celebrate Recovery.

3 Missional Community

A group of any size that connects with unchurched people in a neighborhood, community or region around a specific need, e.g., neighborhood block parties or "dinner church," ministering to the needs of homeless persons in an area, providing a safe place for abused women and children, etc.

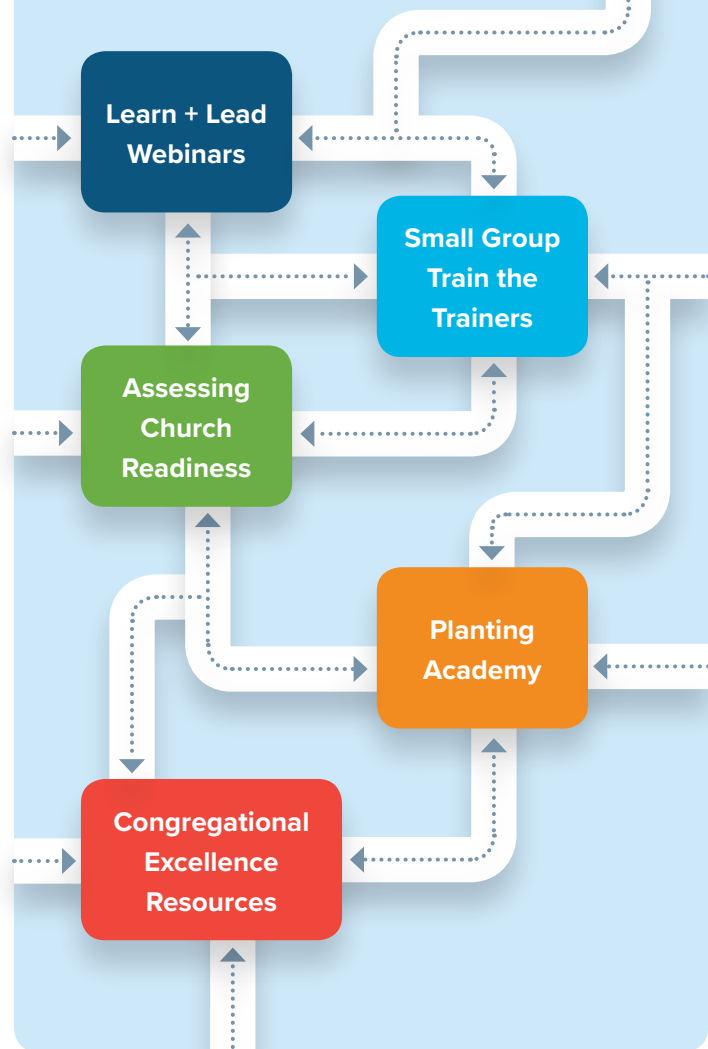
4 New Worship Service

A group of 15 or more that meets at least twice monthly to experience the Living God and reach persons not currently involved in a worshipping community.

5 New Church or Multi-site

A new stand-alone body of believers or a new site of an existing congregation created to reach new people.

AVENUES FOR CREATING NEW PLACES FOR NEW PEOPLE:



How we will meet our goal:

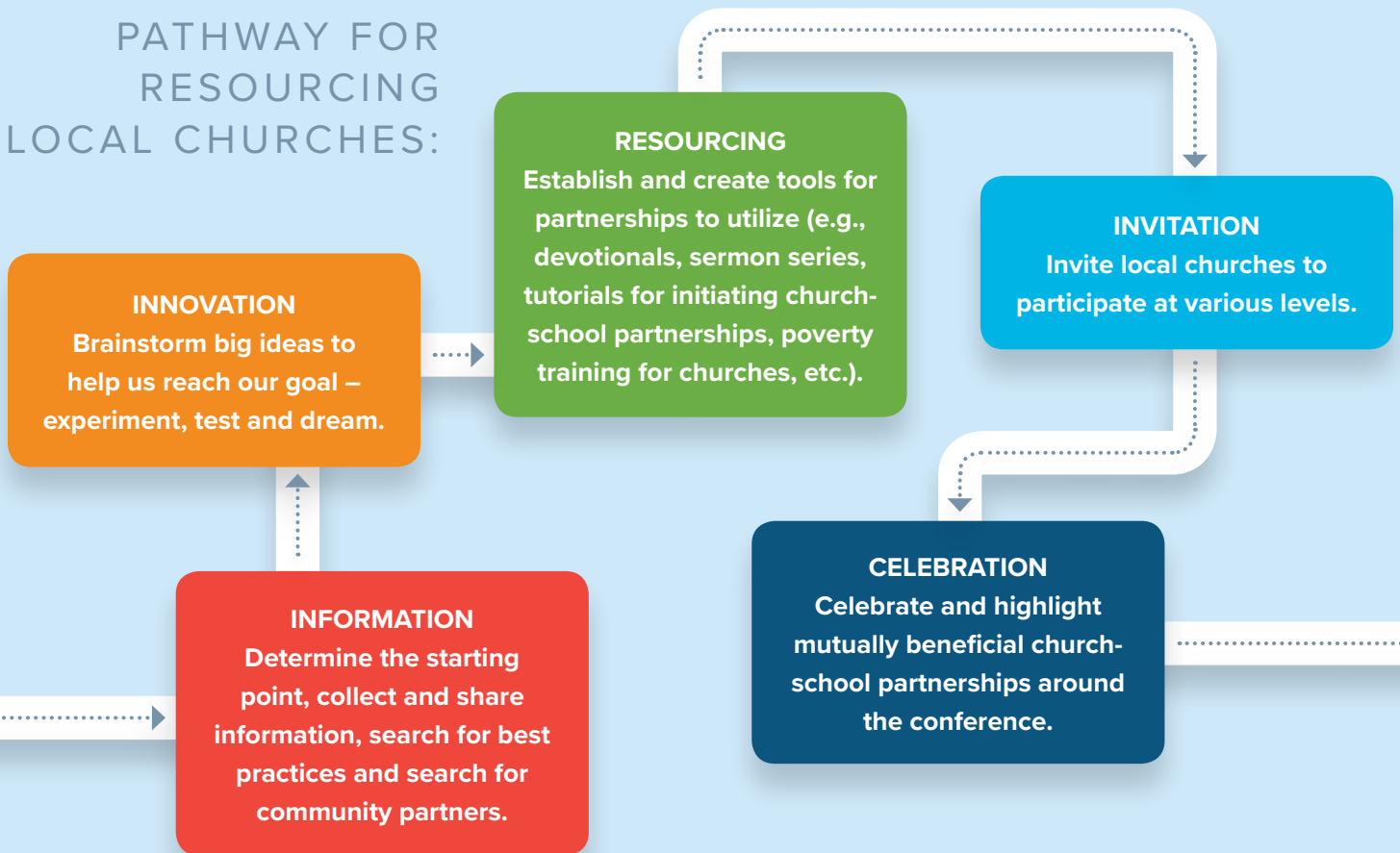
- Visit 12 congregations a month by talking with the ministerial leader and a small group of leaders to cast vision and enlist churches to start new places for new people.

PATHWAY OUT OF POVERTY

Increase the percentage of churches that partner with local school districts from 10% to 40% to raise student reading levels by 6/30/19.

Led by Office of Mission, Service & Justice

PATHWAY FOR RESOURCING LOCAL CHURCHES:



How we will meet our goal:

- Introduce this goal to at least 24 ministerial leaders a month through phone calls or face-to-face meetings.



MISSOURI ANNUAL CONFERENCE CENTER

3601 Amron Court | Columbia, MO 65202 | toll-free: 877-736-1806

phone: 573-441-1770 | www.moumethodist.org |

